

Global Insight

Weekly



A closer look

Midterms: Follow the North Star

Kelly Bogdanova – San Francisco

With the 2018 midterms the most anticipated in a generation, it's easy to get swept up in the political sideshows. But when it comes to setting the investment agenda, there's something else that supersedes the D.C. drama, and we look at what investors should set their compass to follow.

When U.S. elections occur, and certainly surrounding the recent midterms, Washington becomes larger than life. All eyes are focused on it around the world. It's easy to assume that Washington plays a vital role in shaping the U.S. stock market's path.

In reality, the natural ebb-and-flow of the economy, corporate earnings trends, and Federal Reserve policy play greater roles. The power of private sector businesses and American households should not be understated at times like this, and the power of Washington should not be overstated. The domestic economy remains our North Star, and we expect this long expansion to persist for the next year, at least.

So the fact that there will be a dramatic change in control of the House of Representatives does not change our view of the U.S. market and economy. We were constructive before the election and we're constructive now.

The Trump administration proposal that could impact the market the most has already been implemented: tax cuts. They won't be repealed, although the president opened the door to some modifications in exchange for a new middle income tax cut.

Even though the stock market is not at Washington's beck and call, with every election there are issues that can intersect with market performance that investors should consider. Following we discuss infrastructure spending, prescription drug pricing, trade, House investigations of President Trump, and risks of a government shutdown and debt ceiling battle.

Equities usually the winner of midterm elections

We interpret the election outcome to be more about gridlock than sweeping policy changes. Normally the equity market welcomes gridlock, otherwise known as split government or divided government.

A study by RBC Global Asset Management found that the S&P 500 outperformed in four of the past five instances of a split Congress, and rose 15.6% on average compared to a 7.7% average gain during all periods. A split Congress is less common than one might think. This is only the sixth instance since 1951.

The historical performance surrounding midterm elections is the strongest of the seasonal equity market cycles we track. In 21 midterm elections since 1934, the S&P 500 rose 15.7%, on average, in the year following the election compared to an 8.2% average gain in all years during this period.

Market pulse

- 4 U.S. equities strong in the wake of midterms
- 4 Browsing through Canada's online shopping trends
- 5 Q4 economic data in U.K. & Europe off to a soft start
- 5 Asian valuations remain low despite the relief rally

Click [here](#) for authors' contact information.

Priced (in USD) as of 11/8/18 market close, EST (unless otherwise stated).

For important disclosures and required non-U.S. analyst disclosures, see [page 7](#).



Wealth
Management

Any common ground to be had?

For the upcoming Congress, opportunities for compromise seem few and far between given the political and policy realities. Infrastructure and health care are potential areas of cooperation, but the path toward passing legislation seems narrow.

For infrastructure, just about everyone agrees there is great need to replace decaying structures and to build new innovative structures similar to what many other countries already have. But there is a fundamental philosophical disagreement about how to get it done.

Republicans seek to form an infrastructure “bank” and largely attract leveraged private sector funds with a small portion of federal dollars as seed money. In contrast, Democrats seek to fund infrastructure spending by issuing 30-year bonds, with the intention of paying them off from increases in federal and fuel taxes by indexing the latter to inflation. The end goal of this structure is to avoid adding to the national debt.

Perhaps the two sides will ultimately find a point of compromise, but it will likely take a lot of give-and-take and goodwill at a time when these traits are in short supply.

The high cost of pharmaceuticals is one issue an overwhelming proportion of voters care about, according to the Kaiser Family Foundation. There are points of agreement between some Democratic proposals for pharmaceutical price reform and President Trump’s statements during the presidential campaign and soon thereafter.

We think there is more uncertainty about this issue than the pharmaceutical stocks reflected when they rallied immediately following the midterms. We’re not convinced they will escape a new pricing regime, or at least a debate about one.

Status quo for trade

Trade policy is largely under the Trump administration’s purview, so the change in House control will have little impact on tariffs overall or the U.S.-China dispute.

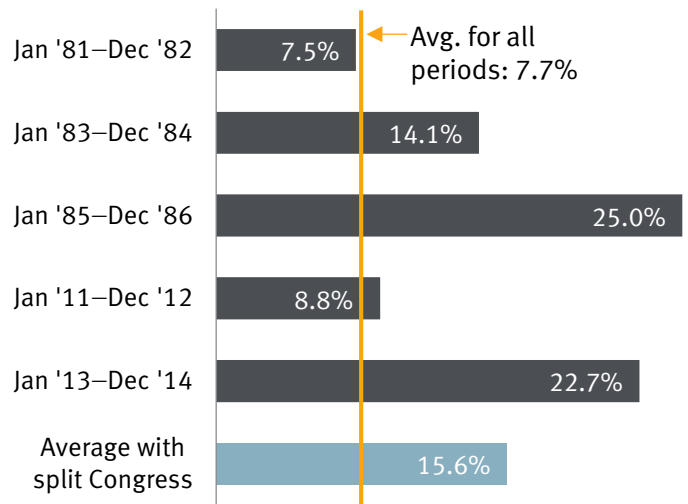
Congress does play a role once trade agreements are struck. We think the updated North American trade deal, otherwise known as USMCA, will ultimately pass in the new Congress because there is bipartisan support for regional trade and the overwhelming majority of states benefit. But Democrats could push for concessions in the legislation to implement the trade agreement.

Investigations affect politics more than economics

There could be multiple showdowns between House Democrats and President Trump if oversight hearings and investigations begin.

Senior House members who are likely to assume leadership roles in powerful committees have previously signaled that

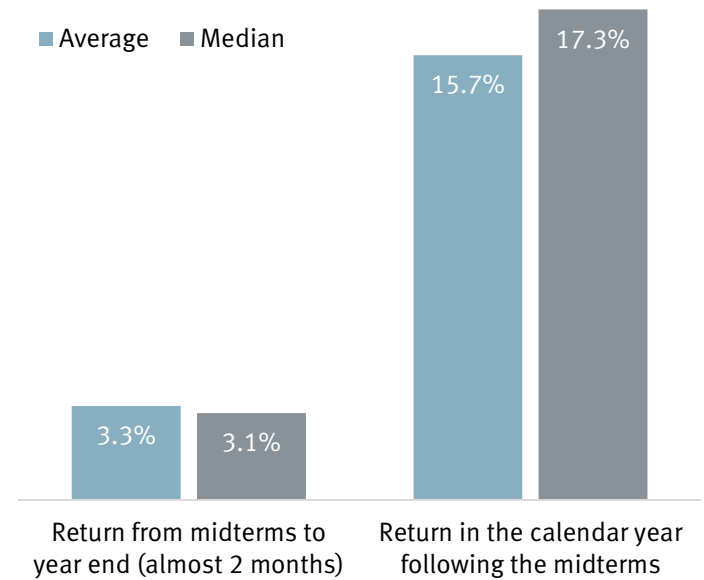
S&P 500 annual returns under a split Congress



Source - RBC Global Asset Management, Bloomberg; Data from January 1, 1951 to October 31, 2018. Reflective of S&P 500 price returns (excluding dividends).

Post-midterm performance has been strong historically

S&P 500 returns after midterm elections (1934–2015)



Note: Average annual return for all years in the study is 8.2%
Source - RBC Wealth Management, Bloomberg

hearings and investigations would occur on various fronts ranging from allegations of irregularities at administrative agencies, to President Trump's tax returns, to events surrounding the 2016 election, and more. Committee leaders have broad subpoena power. At this stage it's unclear if the soon-to-be speaker of the House will proceed cautiously over these grounds, aggressively, or somewhere in between.

This could create bouts of volatility for the equity market, but we doubt it would impact economic momentum much, if at all, unless something serious is revealed that isn't already known.

Fiscal follies

We believe the new divided government increases the risks of a debt ceiling battle and/or a government shutdown given that budget and spending priorities differ meaningfully between the two parties.

Government shutdowns are transitory events. In the past, the market usually experienced a brief pullback, and then resumed its previous trajectory. After the government resumed full operations, little to no discernable economic impact was detected in recent shutdowns, according to RBC Capital Markets.

This current lame-duck Congress will need to pass a bill to fund the government, at least on a temporary basis, by December 7 or many functions will shut down. After that funding deadline is dealt with, another one will likely be established, possibly in the spring of 2019, for the new Congress to handle.

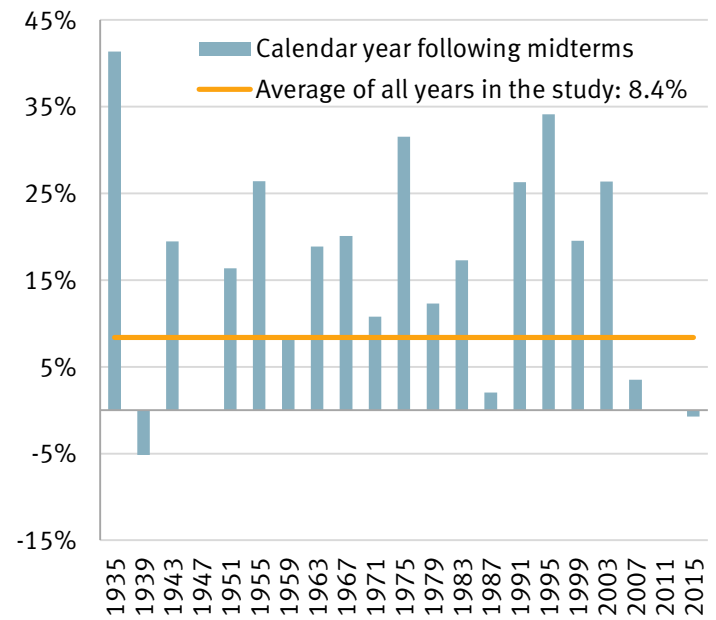
In our view, debt ceiling battles—another matter entirely—can only go so far given the stakes are so high. Key players on both sides of the aisle have said as much previously. Debt default is not a practical option for a country that claims to be leading the world. Elected officials have tremendous incentives to raise the debt ceiling, although it can be a torturous process to get there. The debt ceiling will become an issue again in Q1 2019 as it needs to be raised in early March.

Keep your bearings

From a portfolio standpoint, rather than focusing on Washington, the more important task is to keep the compass pointed toward the North Star—the domestic economy. As long as the major forward-looking indicators continue to signal that growth can persist, these public policy and political issues can be managed. It's the economy, corporate earnings, and the Fed that will define this late cycle period, in our view.

Post-midterm performance well above average in most years

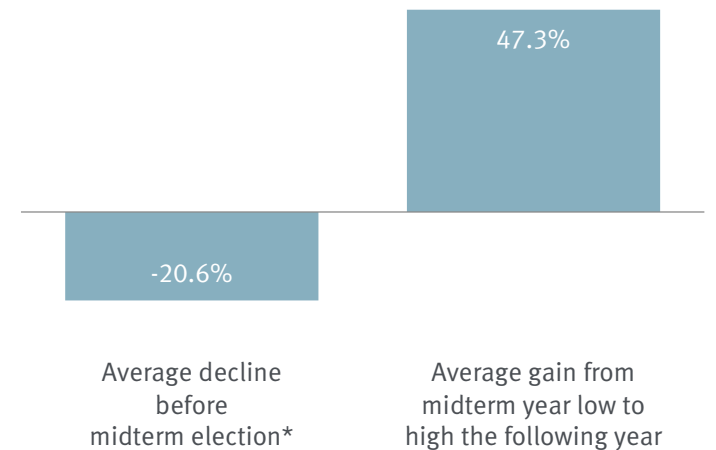
S&P 500 annual returns in the calendar year after the midterms (1935–2015)



Source - RBC Wealth Management, Bloomberg

Corrections are common in midterm years, and so are follow-on rallies

S&P 500 returns surrounding midterm elections (1934–2015)



* Measured from the peak within 12 months before the midterm election year low, to that low.

Source - RBC Wealth Management, Bloomberg; performance before and after 21 midterm election years



United States

Ben Graham, CFA – Minneapolis

- **The removal of the headwind that had been midterm elections fueled the relief rally** that equity markets have experienced in recent days. After the elections played out as expected, with the Democrats taking the House and Republicans holding the Senate, stocks rose multiple percentage points. The S&P 500 is up 3.1% since the day before the election and the Dow Jones Industrial Average has climbed 3.6%. Both small caps and the NASDAQ are trading more than 2.0% higher.
- Among sectors, **Health Care has seen the sharpest relief trade**, as it has jumped more than 4.9% for the week with help from the fact that Democrats did not sweep the elections and win both chambers of Congress. Energy was the second-best-performing sector for the week in which U.S.-led sanctions snapped back into place on Iran. RBC Capital Markets' commodity strategists believe that this loss of Iranian production will be hard for OPEC and non-OPEC affiliates to completely replace, with this likely result being a positive for U.S. firms. Communication Services remains the worst-performing sector for the week while also evidencing the breadth of the relief trade as the group has climbed more than 1.2%.
- The statement from the largely uneventful Fed meeting on Thursday, November 8, contained two notable points: the economy continues to strengthen and the lack of a comment on the recent equity market selloff. Both concepts are favorable for rate hike proponents. However, the market and Fed anticipate one additional 2018 rate hike being delivered in December, and there will be hawkish additions to the voting bloc in 2019. These **hawks will likely continue to use declines in unemployment in their efforts to advocate for further hikes while "neutrals" and doves will use the decelerating economic and earnings backdrop in their counterargument**. The Fed's official stance remains at three more hikes in 2019, after the December 2018 hike, while our view is that the modest deceleration we're experiencing across the economy and markets will cap the eventual 2019 rate hikes at two.



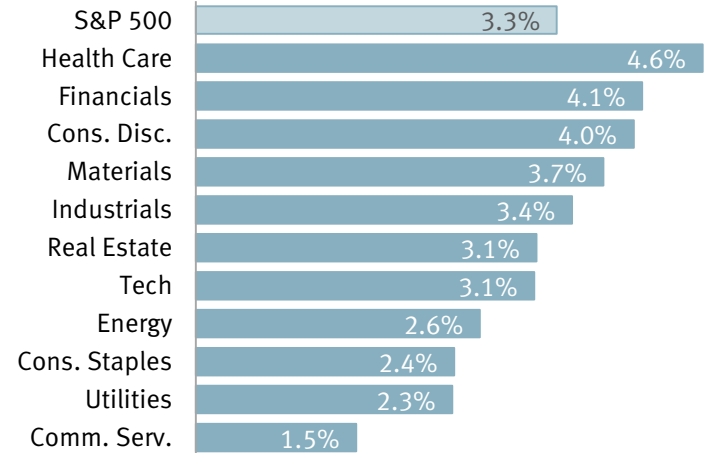
Canada

Carolyn Schroeder & Richard Tan, CFA – Toronto

- RBC Capital Markets conducted a **survey of the e-commerce shopping habits** of roughly 1,200 Canadians. The results showed that **56% of respondents visited retail websites at least once per week** and 19% of respondents

Relief trade: equities strong in the wake of midterms

S&P 500 sector returns, week of November 5



Source - RBC Wealth Management, Bloomberg; data as of 5:20 pm GMT 11/8/18

- made an online purchase at least once per week. Younger respondents, particularly those living in larger cities, are more likely to make online purchases. The 25–34 year-old cohort tends to be more active in e-commerce than those between the ages of 18–24. RBC Capital Markets attributes this to the former likely having greater disposable income and larger households. Interestingly, there were **no material differences with respect to the frequency of visits to e-commerce sites and the frequency of online purchases between men and women**. Canada trails in e-commerce penetration compared to the U.S. and U.K., but RBC Capital Markets believes adoption will increase as the younger generation ages.
- Online grocery shopping has received much attention of late but remains a relatively small portion of total Canadian grocery sales. RBC Capital Markets believes **domestic grocers remain one of the retailers most isolated from e-commerce trends** given that the bulk of respondents (approximately 68%) showed strong preferences in handpicking their own produce and food products in-store. Furthermore, product availability, cost, and/or speed of delivery were not key factors in the low adoption rate of online grocery shopping amongst Canadian consumers, according to the survey. RBC Capital Markets estimates total online grocery expenditure at approximately CA\$2B per annum, which represents only 2% of the roughly CA\$100B Canadian grocery market. However, RBC Capital Markets forecasts the market will double to almost CA\$4B in the next couple of years. **Despite low penetration, major Canadian grocers have been investing in this emerging channel** as e-commerce represents not only a threat but also an opportunity, albeit one that presents near-term costs and execution risk.



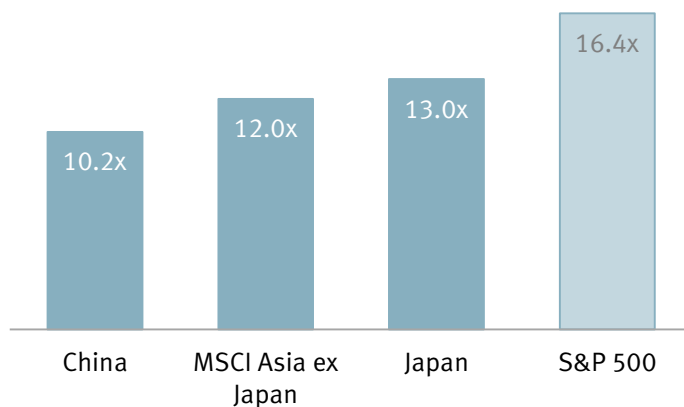
Europe

Frédérique Carrier & Thomas McGarrity, CFA – London

- **More economic data suggested Q4 in the U.K. and Europe is off to a soft start.** In the U.K., the October services Purchasing Managers' Index (PMI) fell sharply from 53.9 to 52.2, confirming the trend observed in the manufacturing sector. The U.K. composite PMI retreated from 54.1 to 52.1, as business uncertainty due to both Brexit and the overall global environment weighed on sentiment. Clarification on Brexit negotiation outcomes could help improve sentiment.
- **Italy became the first country in the euro area where the composite PMI fell below 50 in October, suggesting Italian GDP will likely contract in Q4.** Both manufacturing and services were hurt by the political uncertainty in the country. Data was better elsewhere, with the Spanish services PMI staging a strong recovery from 52.5 to 54 in October, indicating the soft patch in Spanish domestic activity may be over. German industrial production gained 0.2% m/m in September, just beating consensus expectations. The European Commission published its revised forecast for euro area GDP growth of 1.9% for 2019 (previously 2.0%). This is a little optimistic, according to RBC Capital Markets economists who currently expect growth of 1.7% next year.
- With earnings season drawing to an end, a **notable Pan-European trend has been disappointments in the Consumer Discretionary sector where almost 60% of companies missed Q3 consensus expectations.**

Asian valuations remain low despite the relief rally

Next 12-month forward P/E ratios



China is defined as the Shanghai Composite and Japan as the TOPIX
Source - RBC Wealth Management, Bloomberg; data as of 11/7/18

The misses, as well as guidance disappointments, have been spread across various subsectors, including Autos (disruption from tougher European emissions testing, sales downturn in China), Media (weak TV advertising), Retail (weakening sales growth), and Travel and Leisure (rising wages pressuring margins). We believe it is important for investors to focus on companies with leading market positions and strong brands in the Consumer Discretionary space.



Asia Pacific

Jay Roberts, CFA – Hong Kong

- After a miserable October, the worst month of the year by far for stocks, Asian equities rallied at the beginning of November. **The MSCI Asia Pacific Index has risen by 5% from its low on October 29.** Some markets, such as South Korea and India, saw particular strength in stocks. China's renminbi advanced against the dollar while the yen weakened.
- **The Asian equity market also responded well to the U.S. midterm election results. The exception to this was mainland China, which actually declined.** In our view, the election result **doesn't make much difference to the U.S. view on, and strategy towards, China.** This is one of the few issues that enjoys bipartisan support in Washington. It is possible that there could be some kind of piecemeal agreement between Presidents Trump and Xi at the G20 summit later this month, for example to delay imposing the next round of tariffs due to start in January or to agree to re-enter negotiations, but nothing beyond that kind of thing, in our view.
- **Toyota Motor** (7203 JP), the world's largest automaker by market capitalization, said it **expects to maintain profit at a similar level to last year** amid some positive forecasts from the company. Toyota may be a beneficiary of the U.S.-China trade dispute. Mainland China, the largest car market in the world, is an important market for Toyota.
- **SoftBank Group** (9984 JP), which owns a unique combination of telecom assets along with major investments in technology firms such as Alibaba (BABA) and NVIDIA (NVDA), **reported quarterly earnings that were much better than forecast.** The beat was mainly due to an increase in value in some of its technology investments such as India's OYO Rooms and NVIDIA. SoftBank's stock price had been weak recently due to events in Saudi Arabia, the largest investor in the SoftBank Vision Fund, a \$100B tech investment fund.



MARKET SCORECARD

Data as of November 8, 2018

Equities (local currency)	Level	MTD	YTD	1 yr	2 yr
S&P 500	2,806.83	3.5%	5.0%	8.2%	31.2%
Dow Industrials (DJIA)	26,191.22	4.3%	6.0%	11.2%	42.9%
NASDAQ	7,530.89	3.1%	9.1%	10.9%	45.0%
Russell 2000	1,578.21	4.4%	2.8%	6.5%	32.1%
S&P/TSX Comp	15,357.47	2.2%	-5.3%	-4.6%	4.8%
FTSE All-Share	3,923.32	0.5%	-7.1%	-5.2%	5.6%
STOXX Europe 600	367.08	1.5%	-5.7%	-6.9%	9.6%
EURO STOXX 50	3,237.60	1.3%	-7.6%	-11.4%	7.1%
Hang Seng	26,227.72	5.0%	-12.3%	-9.3%	14.5%
Shanghai Comp	2,635.63	1.3%	-20.3%	-22.8%	-16.3%
Nikkei 225	22,486.92	2.6%	-1.2%	-1.9%	31.0%
India Sensex	35,237.68	2.3%	3.5%	6.1%	27.7%
Singapore Straits Times	3,093.24	2.5%	-9.1%	-9.6%	9.7%
Brazil Ibovespa	85,620.13	-2.1%	12.1%	15.1%	33.5%
Mexican Bolsa IPC	44,190.25	0.6%	-10.5%	-9.5%	-8.8%
Commodities (USD)	Price	MTD	YTD	1 yr	2 yr
Gold (spot \$/oz)	1,223.41	0.7%	-6.1%	-4.5%	-4.1%
Silver (spot \$/oz)	14.43	1.3%	-14.8%	-15.3%	-21.4%
Copper (\$/metric ton)	6,171.00	2.2%	-14.4%	-9.6%	18.2%
Oil (WTI spot/bbl)	60.67	-7.1%	0.4%	6.8%	34.9%
Oil (Brent spot/bbl)	70.77	-6.2%	5.8%	11.5%	53.7%
Natural Gas (\$/mmBtu)	3.56	9.1%	20.5%	12.1%	35.2%

Govt bonds (bps chg)	Yield	MTD	YTD	1 yr	2 yr
U.S. 10-Yr Tsy	3.239%	9.6	83.4	90.5	138.5
Canada 10-Yr	2.545%	5.1	50.0	62.5	127.2
U.K. 10-Yr	1.565%	12.8	37.5	34.0	32.8
Germany 10-Yr	0.457%	7.2	3.0	13.1	26.9
Fixed Income (returns)	Yield	MTD	YTD	1 yr	2 yr
U.S. Aggregate	3.64%	-0.1%	-2.5%	-2.4%	-1.1%
U.S. Invest Grade Corp	4.29%	0.2%	-3.6%	-3.0%	0.7%
U.S. High Yield Corp	6.71%	0.6%	1.6%	2.0%	11.1%
Currencies	Rate	MTD	YTD	1 yr	2 yr
U.S. Dollar Index	96.6590	-0.5%	4.9%	1.9%	-1.2%
CAD/USD	0.7604	0.1%	-4.4%	-3.2%	1.0%
USD/CAD	1.3151	0.0%	4.6%	3.3%	-1.0%
EUR/USD	1.1365	0.5%	-5.3%	-2.0%	3.1%
GBP/USD	1.3063	2.3%	-3.3%	-0.4%	5.5%
AUD/USD	0.7258	2.6%	-7.1%	-5.5%	-6.5%
USD/JPY	114.0600	1.0%	1.2%	0.2%	8.5%
EUR/JPY	129.6400	1.5%	-4.2%	-1.8%	11.8%
EUR/GBP	0.8700	-1.8%	-2.0%	-1.6%	-2.3%
EUR/CHF	1.1434	0.2%	-2.3%	-1.4%	6.1%
USD/SGD	1.3756	-0.7%	3.0%	1.0%	-0.8%
USD/CNY	6.9345	-0.6%	6.6%	4.6%	2.2%
USD/MXN	20.1843	-0.8%	2.7%	5.8%	10.2%
USD/BRL	3.7608	1.0%	13.7%	15.7%	18.6%

Source - Bloomberg. Note: Equity returns do not include dividends, except for the Brazilian Ibovespa. Bond yields in local currencies. Copper Index data and U.S. fixed income returns as of Wednesday's close. Dollar Index measures USD vs. six major currencies. Currency rates reflect market convention (CAD/USD is the exception). Currency returns quoted in terms of the first currency in each pairing. Data as of 8:35 pm GMT 11/8/18.

Examples of how to interpret currency data: CAD/USD 0.76 means 1 Canadian dollar will buy 0.76 U.S. dollar. CAD/USD -4.4% return means the Canadian dollar fell 4.4% vs. the U.S. dollar year to date. USD/JPY 114.06 means 1 U.S. dollar will buy 114.06 yen. USD/JPY 1.2% return means the U.S. dollar rose 1.2% against the yen year to date.

Authors

Kelly Bogdanova – San Francisco, United States

kelly.bogdanova@rbc.com; RBC Capital Markets, LLC

Ben Graham, CFA – Minneapolis, United States

benjamin.graham@rbc.com; RBC Capital Markets, LLC

Richard Tan, CFA – Toronto, Canada

richard.tan@rbc.com; RBC Dominion Securities Inc.

Carolyn Schroeder – Toronto, Canada

carolyn.schroeder@rbc.com; RBC Dominion Securities Inc.

Frédérique Carrier – London, United Kingdom

frederique.carrier@rbc.com; Royal Bank of Canada Investment Management (U.K.) Ltd.

Thomas McGarrity, CFA – London, United Kingdom

thomas.mcgarritty@rbc.com; Royal Bank of Canada Investment Management (U.K.) Ltd.

Jay Roberts, CFA – Hong Kong, China

jay.roberts@rbc.com; RBC Investment Services (Asia) Limited

Disclosures and Disclaimer

Analyst Certification

All of the views expressed in this report accurately reflect the personal views of the responsible analyst(s) about any and all of the subject securities or issuers. No part of the compensation of the responsible analyst(s) named herein is, or will be, directly or indirectly, related to the specific recommendations or views expressed by the responsible analyst(s) in this report.

Important Disclosures

In the U.S., RBC Wealth Management operates as a division of RBC Capital Markets, LLC. In Canada, RBC Wealth Management includes, without limitation, RBC Dominion Securities Inc., which is a foreign affiliate of RBC Capital Markets, LLC. This report has been prepared by RBC Capital Markets, LLC, which is an indirect wholly-owned subsidiary of the Royal Bank of Canada and, as such, is a related issuer of Royal Bank of Canada.

Non-U.S. Analyst Disclosure: Carolyn Schroeder and Richard Tan, employees of RBC Wealth Management USA's foreign affiliate RBC Dominion Securities Inc.; Frédérique Carrier and Thomas McGarrity, employees of RBC Wealth Management USA's foreign affiliate Royal Bank of Canada Investment Management (U.K.) Limited; and Jay Roberts, an employee of RBC Investment Services (Asia) Limited; contributed to the preparation of this publication. These individuals are not registered with or qualified as research analysts with the U.S. Financial Industry Regulatory Authority ("FINRA") and, since they are not associated persons of RBC Wealth Management, they may not be subject to FINRA Rule 2241 governing communications with subject companies, the making of public appearances, and the trading of securities in accounts held by research analysts.

In the event that this is a compendium report (covers six or more companies), RBC Wealth Management may choose to provide important disclosure information by reference. To access current

disclosures, clients should refer to <https://www.rbccm.com/GLDisclosure/PublicWeb/DisclosureLookup.aspx?EntityID=2> to view disclosures regarding RBC Wealth Management and its affiliated firms. Such information is also available upon request to RBC Wealth Management Publishing, 60 South Sixth St, Minneapolis, MN 55402.

References to a Recommended List in the recommendation history chart may include one or more recommended lists or model portfolios maintained by RBC Wealth Management or one of its affiliates. RBC Wealth Management recommended lists include the Guided Portfolio: Prime Income (RL 6), the Guided Portfolio: Dividend Growth (RL 8), the Guided Portfolio: ADR (RL 10), and the Guided Portfolio: All Cap Growth (RL 12), and former lists called the Guided Portfolio: Large Cap (RL 7), the Guided Portfolio: Midcap 111 (RL 9), and the Guided Portfolio: Global Equity (U.S.) (RL 11). RBC Capital Markets recommended lists include the Strategy Focus List and the Fundamental Equity Weightings (FEW) portfolios. The abbreviation 'RL On' means the date a security was placed on a Recommended List. The abbreviation 'RL Off' means the date a security was removed from a Recommended List.

Distribution of Ratings

For the purpose of ratings distributions, regulatory rules require member firms to assign ratings to one of three rating categories - Buy, Hold/Neutral, or Sell - regardless of a firm's own rating categories. Although RBC Capital Markets, LLC ratings of Top Pick/Outperform, Sector Perform, and Underperform most closely correspond to Buy, Hold/Neutral and Sell, respectively, the meanings are not the same because our ratings are determined on a relative basis.

Rating	Count	Percent	Investment Banking Services Provided During Past 12 Months	
			Count	Percent
Buy [Top Pick & Outperform]	859	54.33	251	29.22
Hold [Sector Perform]	646	40.86	125	19.35
Sell [Underperform]	76	4.81	5	6.58

Explanation of RBC Capital Markets, LLC Equity Rating System

An analyst's "sector" is the universe of companies for which the analyst provides research coverage. Accordingly, the rating assigned to a particular stock represents solely the analyst's view of how that stock will perform over the next 12 months relative to the analyst's sector average.

Ratings:

Top Pick (TP): Represents analyst's best idea in the sector; expected to provide significant absolute total return over 12 months with a favorable risk-reward ratio. **Outperform (O):** Expected to materially outperform sector average over 12 months. **Sector Perform (SP):** Returns expected to be in line with sector average over 12 months. **Underperform (U):** Returns expected to be materially below sector average over 12 months. **Restricted (R):** RBC policy precludes certain types of communications, including an investment recommendation, when RBC is acting as an advisor in certain merger or other strategic transactions and in certain other circumstances. **Not Rated (NR):** The rating, price targets and estimates have been removed due to applicable legal, regulatory or policy constraints which may include when RBC Capital Markets is acting in an advisory capacity involving the company.

Risk Rating:

The **Speculative** risk rating reflects a security's lower level of financial or operating predictability, illiquid share trading volumes, high balance sheet leverage, or limited operating history that result in a higher expectation of financial and/or stock price volatility.

Valuation and Risks to Rating and Price Target

When RBC Wealth Management assigns a value to a company in a research report, FINRA Rules and NYSE Rules (as incorporated into the FINRA Rulebook) require that the basis for the valuation and the impediments to obtaining that valuation be described. Where applicable, this information is included in the text of our research in the sections entitled "Valuation" and "Risks to Rating and Price Target", respectively.

The analyst(s) responsible for preparing this research report received compensation that is based upon various factors, including total revenues of RBC Capital Markets, LLC, and its affiliates, a portion of which are or have been generated by investment banking activities of the member companies of RBC Capital Markets, LLC and its affiliates.

Other Disclosures

Prepared with the assistance of our national research sources. RBC Wealth Management prepared this report and takes sole responsibility for its content and distribution. The content may have been based, at least in part, on material provided by our third-party correspondent research services. Our third-party correspondent has given RBC Wealth Management general permission to use its research reports as source materials, but has not reviewed or approved this report, nor has it been informed of its publication. Our third-party correspondent may from time to time have long or short positions in, effect transactions in, and make markets in securities referred to herein. Our third-party correspondent may from time to time perform investment banking or other services for, or solicit investment banking or other business from, any company mentioned in this report.

RBC Wealth Management endeavors to make all reasonable efforts to provide research simultaneously to all eligible clients, having regard to local time zones in overseas jurisdictions. In certain investment advisory accounts, RBC Wealth Management will act as overlay manager for our clients and will initiate transactions in the securities referenced herein for those accounts upon receipt of this report. These transactions may occur before or after your receipt of this report and may have a short-term impact on the market price of the securities in which transactions occur. RBC Wealth Management research is posted to our proprietary Web sites to ensure eligible clients receive coverage initiations and changes in rating, targets, and opinions in a timely manner. Additional distribution may be done by sales personnel via e-mail, fax, or regular mail. Clients may also receive our research via third-party vendors. Please contact your RBC Wealth Management Financial Advisor for more information regarding RBC Wealth Management research.

Conflicts Disclosure: RBC Wealth Management is registered with the Securities and Exchange Commission as a broker/dealer and an investment adviser, offering both brokerage and investment advisory services. RBC Wealth Management's Policy for Managing Conflicts of Interest in Relation to Investment Research is available from us on our Web site at <https://www.rbccm.com/GLDisclosure/PublicWeb/DisclosureLookup.aspx?EntityID=2>. Conflicts of interests related to

our investment advisory business can be found in Part II of the Firm's Form ADV or the Investment Advisor Group Disclosure Document. Copies of any of these documents are available upon request through your Financial Advisor. We reserve the right to amend or supplement this policy, Part II of the ADV, or Disclosure Document at any time.

The authors are employed by one of the following entities: RBC Wealth Management USA, a division of RBC Capital Markets, LLC, a securities broker-dealer with principal offices located in Minnesota and New York, USA; by RBC Dominion Securities Inc., a securities broker-dealer with principal offices located in Toronto, Canada; by RBC Investment Services (Asia) Limited, a subsidiary of RBC Dominion Securities Inc., a securities broker-dealer with principal offices located in Hong Kong, China; and by Royal Bank of Canada Investment Management (U.K.) Limited, an investment management company with principal offices located in London, United Kingdom.

Research Resources

This document is produced by the Global Portfolio Advisory Committee within RBC Wealth Management's Portfolio Advisory Group. The RBC WM Portfolio Advisory Group provides support related to asset allocation and portfolio construction for the firm's Investment Advisors / Financial Advisors who are engaged in assembling portfolios incorporating individual marketable securities. The Committee leverages the broad market outlook as developed by the RBC Investment Strategy Committee, providing additional tactical and thematic support utilizing research from the RBC Investment Strategy Committee, RBC Capital Markets, and third-party resources.

Third-party disclaimers

The Global Industry Classification Standard ("GICS") was developed by and is the exclusive property and a service mark of MSCI Inc. ("MSCI") and Standard & Poor's Financial Services LLC ("S&P") and is licensed for use by RBC. Neither MSCI, S&P, nor any other party involved in making or compiling the GICS or any GICS classifications makes any express or implied warranties or representations with respect to such standard or classification (or the results to be obtained by the use thereof), and all such parties hereby expressly disclaim all warranties of originality, accuracy, completeness, merchantability and fitness for a particular purpose with respect to any of such standard or classification. Without limiting any of the foregoing, in no event shall MSCI, S&P, any of their affiliates or any third party involved in making or compiling the GICS or any GICS classifications have any liability for any direct, indirect, special, punitive, consequential or any other damages (including lost profits) even if notified of the possibility of such damages.

References herein to "LIBOR", "LIBO Rate", "L" or other LIBOR abbreviations means the London interbank offered rate as administered by ICE Benchmark Administration (or any other person that takes over the administration of such rate).

Disclaimer

The information contained in this report has been compiled by RBC Wealth Management, a division of RBC Capital Markets, LLC, from sources believed to be reliable, but no representation or warranty, express or implied, is made by Royal Bank of Canada, RBC Wealth Management, its affiliates or any other person as to its accuracy, completeness or correctness. All opinions and estimates contained in this report constitute RBC Wealth Management's judgment as of the date of this report, are subject to change without notice and are provided in good faith but without legal responsibility. Past performance is not a guide to future performance, future returns are not guaranteed, and a loss of original capital may occur. Every province in Canada, state in the U.S., and most countries throughout the world have their own laws regulating the types of securities and other investment products which may be offered to their residents, as well as the process for doing so. As a result, the securities discussed in this report may

not be eligible for sale in some jurisdictions. This report is not, and under no circumstances should be construed as, a solicitation to act as securities broker or dealer in any jurisdiction by any person or company that is not legally permitted to carry on the business of a securities broker or dealer in that jurisdiction. Nothing in this report constitutes legal, accounting or tax advice or individually tailored investment advice. This material is prepared for general circulation to clients, including clients who are affiliates of Royal Bank of Canada, and does not have regard to the particular circumstances or needs of any specific person who may read it. The investments or services contained in this report may not be suitable for you and it is recommended that you consult an independent investment advisor if you are in doubt about the suitability of such investments or services. To the full extent permitted by law neither Royal Bank of Canada nor any of its affiliates, nor any other person, accepts any liability whatsoever for any direct or consequential loss arising from any use of this report or the information contained herein. No matter contained in this document may be reproduced or copied by any means without the prior consent of Royal Bank of Canada. Additional information is available upon request.

To U.S. Residents: This publication has been approved by RBC Capital Markets, LLC, Member NYSE/FINRA/SIPC, which is a U.S. registered broker-dealer and which accepts responsibility for this report and its dissemination in the United States. RBC Capital Markets, LLC, is an indirect wholly-owned subsidiary of the Royal Bank of Canada and, as such, is a related issuer of Royal Bank of Canada. Any U.S. recipient of this report that is not a registered broker-dealer or a bank acting in a broker or dealer capacity and that wishes further information regarding, or to effect any transaction in, any of the securities discussed in this report, should contact and place orders with RBC Capital Markets, LLC. International investing involves risks not typically associated with U.S. investing, including currency fluctuation, foreign taxation, political instability and different accounting standards.

To Canadian Residents: This publication has been approved by RBC Dominion Securities Inc. RBC Dominion Securities Inc.* and Royal Bank of Canada are separate corporate entities which are affiliated. *Member-Canadian Investor Protection Fund. ®Registered trademark of Royal Bank of Canada. Used under license. RBC Wealth Management is a registered trademark of Royal Bank of Canada. Used under license.

RBC Wealth Management (British Isles): This publication is distributed by Royal Bank of Canada Investment Management (U.K.) Limited and RBC Investment Solutions (CI) Limited. Royal Bank of Canada Investment Management (U.K.) Limited is authorised and regulated by the Financial Conduct Authority (Reference number: 146504). Registered office: Riverbank House, 2 Swan Lane, London, EC4R 3BF, UK. RBC Investment Solutions (CI) Limited is regulated by the Jersey Financial Services Commission in the conduct of investment business in Jersey. Registered office: Gaspé House, 66-72 Esplanade, St Helier, Jersey JE2 3QT, Channel Islands, registered company number 119162.

To Hong Kong Residents: This publication is distributed in Hong Kong by Royal Bank of Canada, Hong Kong Branch which is regulated by the Hong Kong Monetary Authority and the Securities and Futures Commission ('SFC'), and RBC Investment Services (Asia) Limited, which is regulated by the SFC. Financial Services provided to Australia: Financial services may be provided in Australia in accordance with applicable law. Financial services provided by the Royal Bank of Canada, Hong Kong Branch are provided pursuant to the Royal Bank of Canada's Australian Financial Services Licence ('AFSL') (No. 246521).

To Singapore Residents: This publication is distributed in Singapore by the Royal Bank of Canada, Singapore Branch, a registered entity licensed by the Monetary Authority of Singapore. This material has been prepared for general circulation and does not take into account the objectives, financial situation, or needs of any recipient. You are advised to seek independent advice from a financial adviser before purchasing any product. If you do not obtain independent advice, you should consider whether the product is suitable for you. Past performance is not indicative of future performance. If you have any questions related to this publication, please contact the Royal Bank of Canada, Singapore Branch. Royal Bank of Canada, Singapore Branch accepts responsibility for this report and its dissemination in Singapore.

© RBC Capital Markets, LLC 2018 - Member NYSE/FINRA/SIPC

© RBC Dominion Securities Inc. 2018 - Member Canadian Investor Protection Fund

© RBC Europe Limited 2018

© Royal Bank of Canada 2018

All rights reserved

RBC1253