



Capital
Markets

RBC Capital Markets, LLC
Frank G. Morgan, CFA
 (Analyst)
 (615) 372-1331
 frank.morgan@rbccm.com
Anton Hie (Analyst)
 (615) 372-1321
 anton.hie@rbccm.com

Ben Hendrix (AVP)
 (615) 372-1323
 ben.hendrix@rbccm.com

September 27, 2020

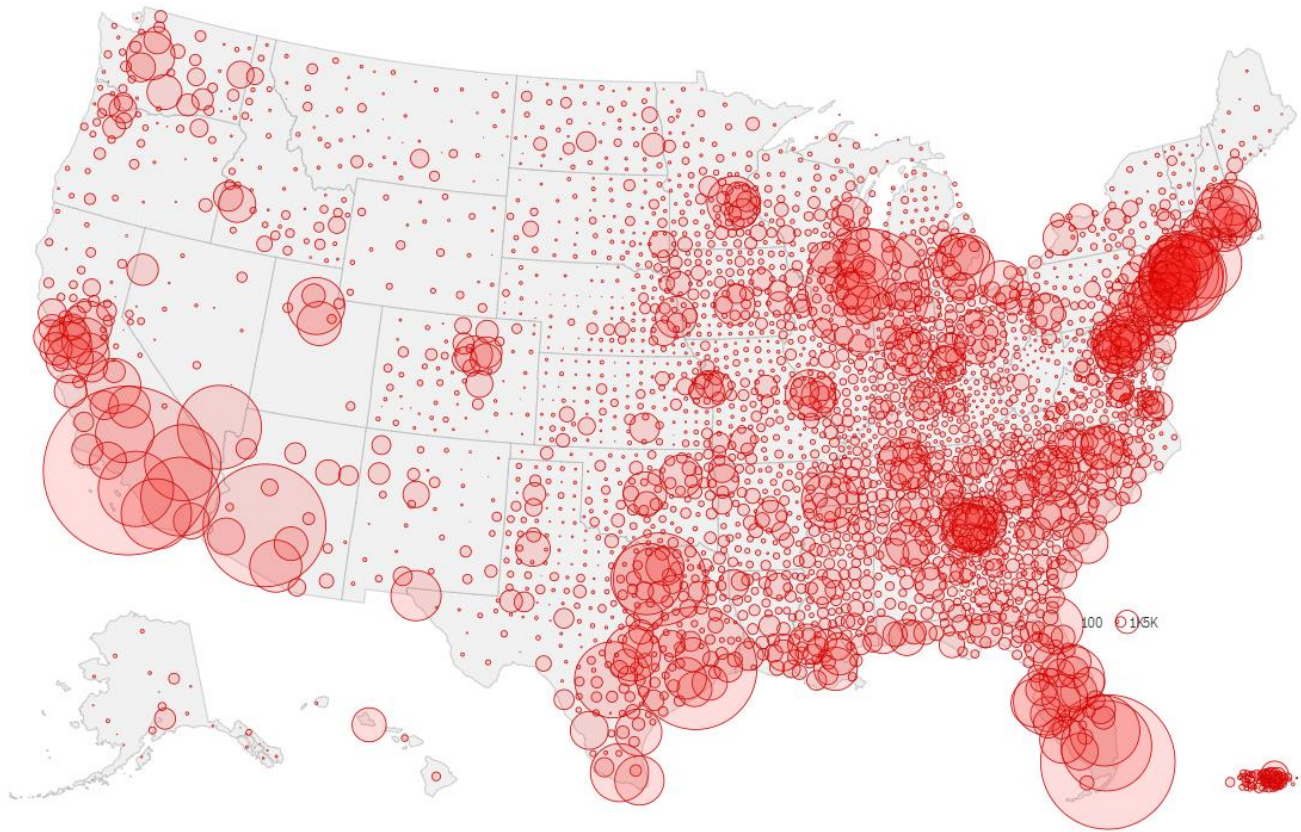
Health Care Services: COVID-19 tracker

A summary of case volume and testing reported by the CDC

As part of our ongoing monitoring of the developing coronavirus pandemic, we are publishing a summary of CDC statistics on the spread of coronavirus in the US, including reported cases of COVID-19 and testing volume.

- **As of Sunday, September 27, state and local health agencies have identified 7.11MM cumulative COVID-19 cases according to reporting by CNN Health** (see Exhibit 1). Note that data provided by state and local health agencies includes cases not yet reported to the CDC. The virus has claimed 204,750 lives so far, including 33,131 in New York and 16,103 in New Jersey, though death rates are creeping up in other hot spots.
- **Data from The Atlantic's COVID Tracking Project notes that the cumulative number of cases identified nationwide includes 2.77MM recovered cases, which when combined with total deaths suggests more than 4.14MM active cases nationwide.** The Atlantic reports that 29,432 individuals are currently hospitalized with COVID-19, which is up approximately 2.8% from last week following several weeks of decline.
- **As shown in Exhibits 2 and 3, the CDC reports that 37 states are reporting more than 40,000 cases each** and that 14 states have seen more than 4,500 deaths each.
- State-level analysis reported by NPR finds that North Dakota, South Dakota, Arkansas, Wisconsin, Utah, and Oklahoma represent regions at highest infection risk, characterized by unchecked community spread and each showing infection rates of 28 cases or more per 100K population.
- **As shown in Exhibit 5, national forecasts from 36 agencies indicate** that the cumulative number of deaths is expected to reach as high as 214,000 and 226,000 by October 17.

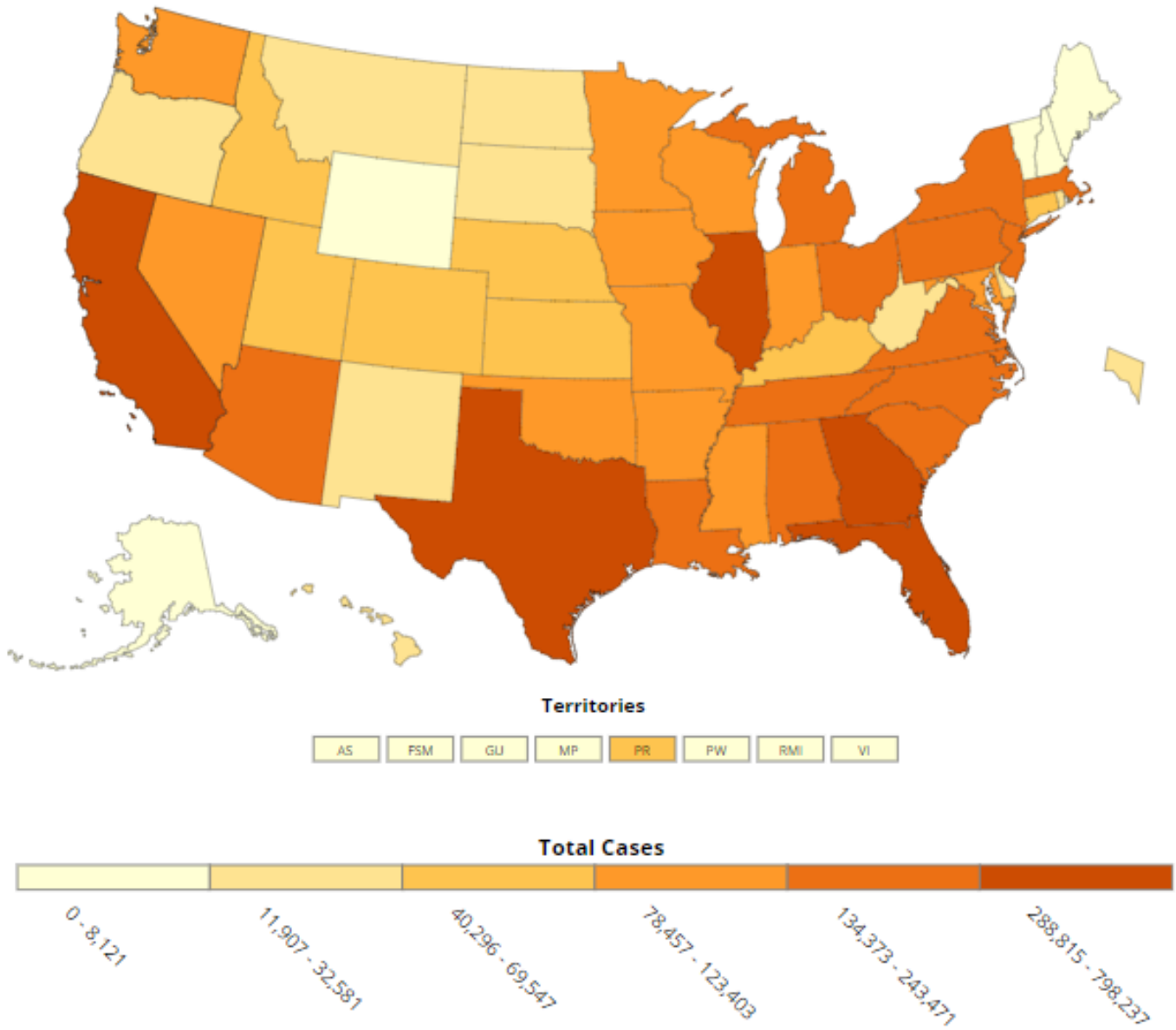
Exhibit 1: Heat map of COVID-19 cases identified by state and local health agencies, as reported by CNN Health



Source: CNN (<https://www.cnn.com/interactive/2020/health/coronavirus-us-maps-and-cases/>)

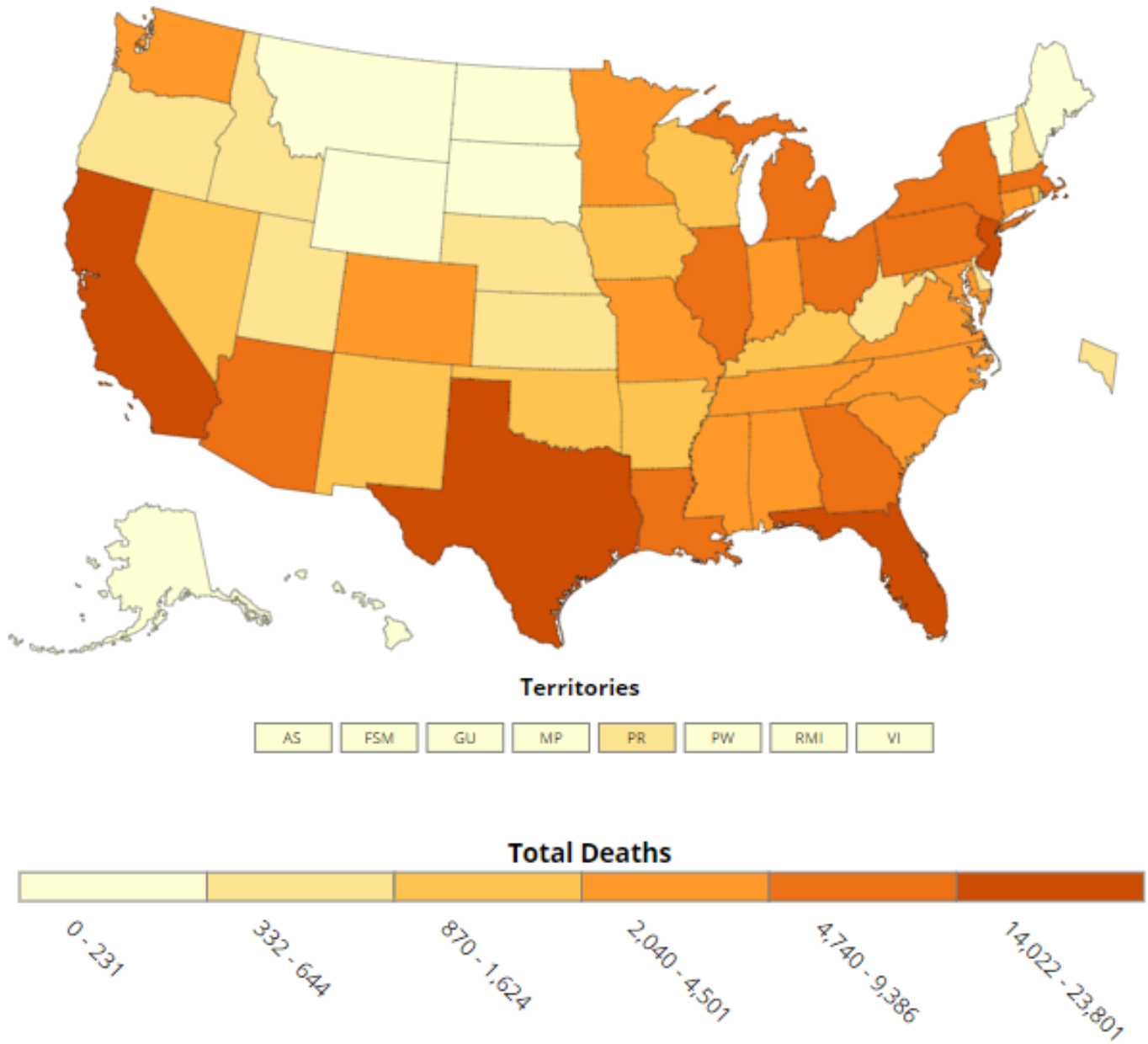


Exhibit 2: Heat map of COVID-19 cases by state



Source: Centers for Disease Control and Prevention (<https://www.cdc.gov/coronavirus/2019-ncov/cases-in-us.html>)

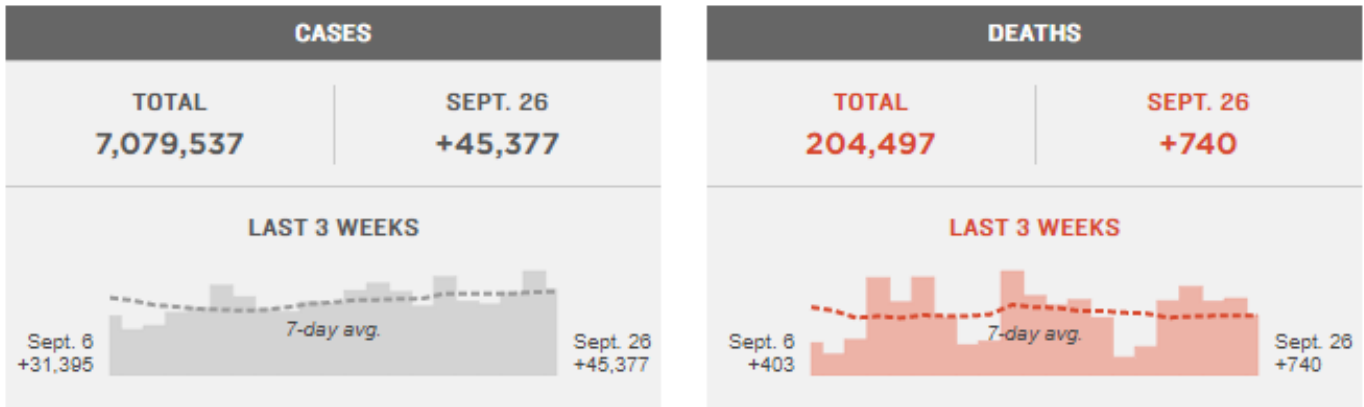
Exhibit 3: Heat map of COVID-19 **deaths** by state



Source: Centers for Disease Control and Prevention (<https://www.cdc.gov/coronavirus/2019-ncov/cases-in-us.html>)

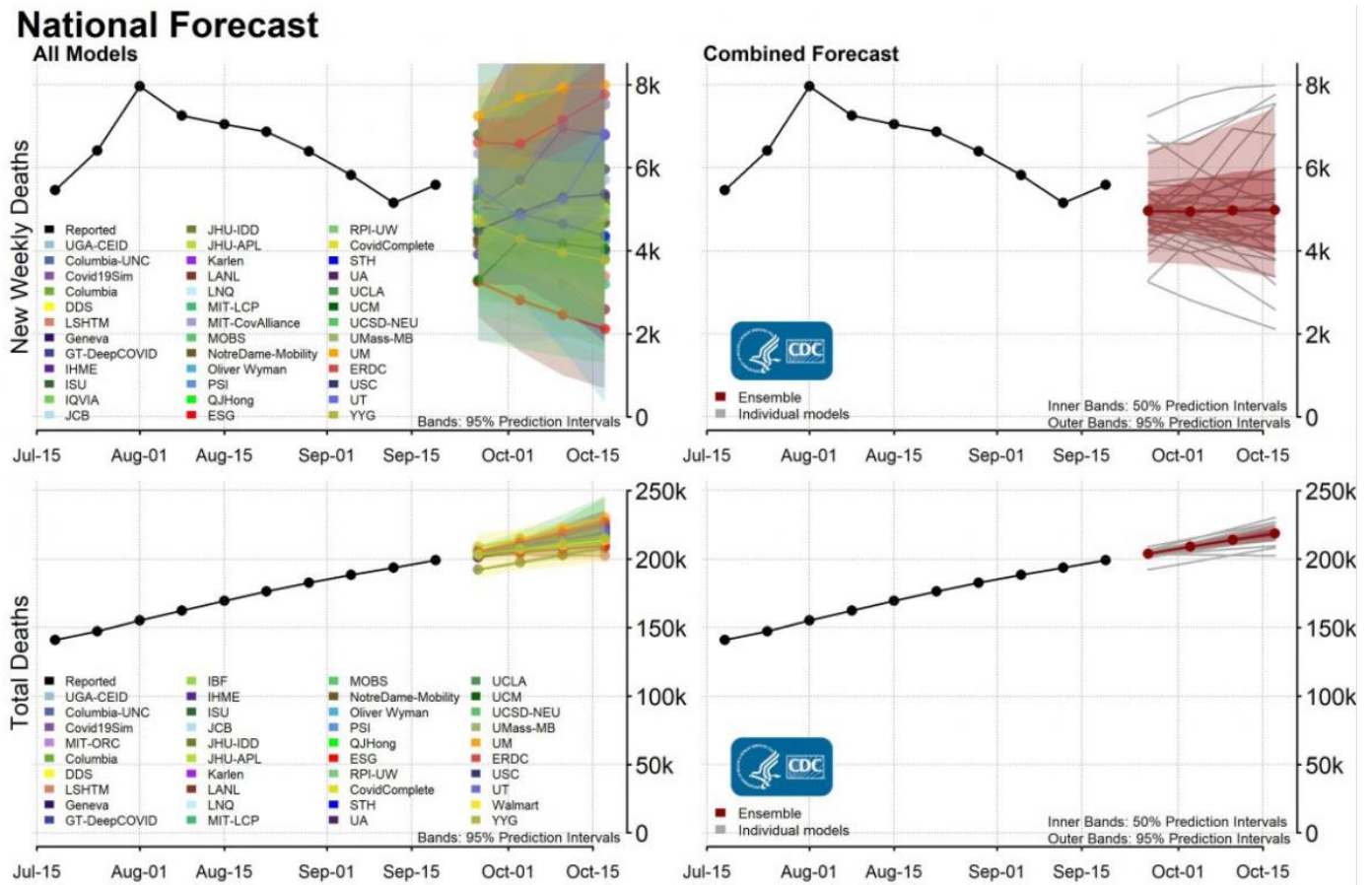


Exhibit 4: New COVID-19 cases and deaths over the last three weeks



Source: NPR

Exhibit 5: National forecasts for COVID-19 deaths



Source: Centers for Disease Control and Prevention (<https://www.cdc.gov/coronavirus/2019-ncov/covid-data/forecasting-us.html>)



Required disclosures

Conflicts disclosures

The analyst(s) responsible for preparing this research report received compensation that is based upon various factors, including total revenues of the member companies of RBC Capital Markets and its affiliates, a portion of which are or have been generated by investment banking activities of the member companies of RBC Capital Markets and its affiliates.

Distribution of ratings

For the purpose of ratings distributions, regulatory rules require member firms to assign ratings to one of three rating categories - Buy, Hold/Neutral, or Sell - regardless of a firm's own rating categories. Although RBC Capital Markets' ratings of Outperform (O), Sector Perform (SP), and Underperform (U) most closely correspond to Buy, Hold/Neutral and Sell, respectively, the meanings are not the same because our ratings are determined on a relative basis.

Distribution of ratings RBC Capital Markets, Equity Research As of 30-Jun-2020				
Rating	Count	Percent	Investment Banking Serv./Past 12 Mos.	
			Count	Percent
BUY [Outperform]	776	51.63	238	30.67
HOLD [Sector Perform]	635	42.25	130	20.47
SELL [Underperform]	92	6.12	12	13.04

Conflicts policy

RBC Capital Markets Policy for Managing Conflicts of Interest in Relation to Investment Research is available from us on request. To access our current policy, clients should refer to

<https://www.rbccm.com/global/file-414164.pdf>

or send a request to RBC Capital Markets Research Publishing, P.O. Box 50, 200 Bay Street, Royal Bank Plaza, 29th Floor, South Tower, Toronto, Ontario M5J 2W7. We reserve the right to amend or supplement this policy at any time.

Dissemination of research and short-term trade ideas

RBC Capital Markets endeavors to make all reasonable efforts to provide research simultaneously to all eligible clients, having regard to local time zones in overseas jurisdictions. RBC Capital Markets' equity research is posted to our proprietary website to ensure eligible clients receive coverage initiations and changes in ratings, targets and opinions in a timely manner. Additional distribution may be done by the sales personnel via email, fax, or other electronic means, or regular mail. Clients may also receive our research via third party vendors. RBC Capital Markets also provides eligible clients with access to SPARC on the Firms proprietary INSIGHT website, via email and via third-party vendors. SPARC contains market color and commentary regarding subject companies on which the Firm currently provides equity research coverage. Research Analysts may, from time to time, include short-term trade ideas in research reports and / or in SPARC. A short-term trade idea offers a short-term view on how a security may trade, based on market and trading events, and the resulting trading opportunity that may be available. A short-term trade idea may differ from the price targets and recommendations in our published research reports reflecting the research analyst's views of the longer-term (one year) prospects of the subject company, as a result of the differing time horizons, methodologies and/or other factors. Thus, it is possible that a subject company's common equity that is considered a long-term 'Sector Perform' or even an 'Underperform' might present a short-term buying opportunity as a result of temporary selling pressure in the market; conversely, a subject company's common equity rated a long-term 'Outperform' could be considered susceptible to a short-term downward price correction. Short-term trade ideas are not ratings, nor are they part of any ratings system, and the firm generally does not intend, nor undertakes any obligation, to maintain or update short-term trade ideas. Short-term trade ideas may not be suitable for all investors and have not been tailored to individual investor circumstances and objectives, and investors should make their own independent decisions regarding any securities or strategies discussed herein. Please contact your investment advisor or institutional salesperson for more information regarding RBC Capital Markets' research.

For a list of all recommendations on the company that were disseminated during the prior 12-month period, please click on the following link: <https://rbccm.bluematrix.com/sellside/MAR.action>

The 12 month history of SPARCs can be viewed at <https://www.rbcinsightresearch.com>.

Analyst certification

All of the views expressed in this report accurately reflect the personal views of the responsible analyst(s) about any and all of the subject securities or issuers. No part of the compensation of the responsible analyst(s) named herein is, or will be, directly or indirectly, related to the specific recommendations or views expressed by the responsible analyst(s) in this report.

Third-party-disclaimers

The Global Industry Classification Standard ("GICS") was developed by and is the exclusive property and a service mark of MSCI Inc. ("MSCI") and Standard & Poor's Financial Services LLC ("S&P") and is licensed for use by RBC. Neither MSCI, S&P, nor any other party involved in making or compiling the GICS or any GICS classifications makes any express or implied warranties or representations with respect to such standard or classification (or the results to be obtained by the use thereof), and all such parties hereby expressly disclaim all warranties of originality, accuracy, completeness, merchantability and fitness for a particular purpose with respect to any of such standard or classification. Without limiting any of the foregoing, in no event shall MSCI, S&P, any of their affiliates or any third party involved in making or compiling the GICS or any GICS classifications have any liability for any direct, indirect, special, punitive, consequential or any other damages (including lost profits) even if notified of the possibility of such damages.

RBC Capital Markets disclaims all warranties of originality, accuracy, completeness, merchantability or fitness for a particular purpose with respect to any statements made to the media or via social media that are in turn quoted in this report, or otherwise reproduced graphically for informational purposes.

References herein to "LIBOR", "LIBO Rate", "L" or other LIBOR abbreviations means the London interbank offered rate as administered by ICE Benchmark Administration (or any other person that takes over the administration of such rate).

Disclaimer

RBC Capital Markets is the business name used by certain branches and subsidiaries of the Royal Bank of Canada, including RBC Dominion Securities Inc., RBC Capital Markets, LLC, RBC Europe Limited, Royal Bank of Canada, Hong Kong Branch and Royal Bank of Canada, Sydney Branch. The information contained in this report has been compiled by RBC Capital Markets from sources believed to be reliable, but no representation or warranty, express or implied, is made by Royal Bank of Canada, RBC Capital Markets, its affiliates or any other person as to its accuracy, completeness or correctness. All opinions and estimates contained in this report constitute RBC Capital Markets' judgement as of the date of this report, are subject to change without notice and are provided in good faith but without legal responsibility. Nothing in this report constitutes legal, accounting or tax advice or individually tailored investment advice. This material is prepared for general circulation to clients and has been prepared without regard to the individual financial circumstances and objectives of persons who receive it. The investments or services contained in this report may not be suitable for you and it is recommended that you consult an independent investment advisor if you are in doubt about the suitability of such investments or services. This report is not an offer to sell or a solicitation of an offer to buy any securities. Past performance is not a guide to future performance, future returns are not guaranteed, and a loss of original capital may occur. RBC Capital Markets research analyst compensation is based in part on the overall profitability of RBC Capital Markets, which includes profits attributable to investment banking revenues. Every province in Canada, state in the U.S., and most countries throughout the world have their own laws regulating the types of securities and other investment products which may be offered to their residents, as well as the process for doing so. As a result, the securities discussed in this report may not be eligible for sale in some jurisdictions. RBC Capital Markets may be restricted from publishing research reports, from time to time, due to regulatory restrictions and/or internal compliance policies. If this is the case, the latest published research reports available to clients may not reflect recent material changes in the applicable industry and/or applicable subject companies. RBC Capital Markets research reports are current only as of the date set forth on the research reports. This report is not, and under no circumstances should be construed as, a solicitation to act as securities broker or dealer in any jurisdiction by any person or company that is not legally permitted to carry on the business of a securities broker or dealer in that jurisdiction. To the full extent permitted by law neither RBC Capital Markets nor any of its affiliates, nor any other person, accepts any liability whatsoever for any direct, indirect or consequential loss arising from, or in connection with, any use of this report or the information contained herein. No matter contained in this document may be reproduced or copied by any means without the prior written consent of RBC Capital Markets in each instance.

Additional information is available on request.

To U.S. Residents:

This publication has been approved by RBC Capital Markets, LLC (member FINRA, NYSE, SIPC), which is a U.S. registered broker-dealer and which accepts responsibility for this report and its dissemination in the United States. Any U.S. recipient of this report that is not a registered broker-dealer or a bank acting in a broker or dealer capacity and that wishes further information regarding, or to effect any transaction in, any of the securities discussed in this report, should contact and place orders with RBC Capital Markets, LLC.

To Canadian Residents:

This publication has been approved by RBC Dominion Securities Inc. (member IIROC). Any Canadian recipient of this report that is not a Designated Institution in Ontario, an Accredited Investor in British Columbia or Alberta or a Sophisticated Purchaser in Quebec (or similar permitted purchaser in any other province) and that wishes further information regarding, or to effect any transaction in, any of the securities discussed in this report should contact and place orders with RBC Dominion Securities Inc., which, without in any way limiting the foregoing, accepts responsibility for this report and its dissemination in Canada.

To U.K. Residents:

This publication has been approved by RBC Europe Limited ('RBCEL') which is authorized by the Prudential Regulation Authority and regulated by the Financial Conduct Authority ('FCA') and the Prudential Regulation Authority, in connection with its distribution in the United Kingdom. This material is not for general distribution in the United Kingdom to retail clients, as defined under the rules of the FCA. RBCEL accepts responsibility for this report and its dissemination in the United Kingdom.

To German Residents:

This material is distributed in Germany by RBC Europe Limited, Frankfurt Branch which is regulated by the Bundesanstalt für Finanzdienstleistungsaufsicht (BaFin).

To Persons Receiving This Advice in Australia:



This material has been distributed in Australia by Royal Bank of Canada, Sydney Branch (ABN 86 076 940 880, AFSL No. 246521). This material has been prepared for general circulation and does not take into account the objectives, financial situation or needs of any recipient. Accordingly, any recipient should, before acting on this material, consider the appropriateness of this material having regard to their objectives, financial situation and needs. If this material relates to the acquisition or possible acquisition of a particular financial product, a recipient in Australia should obtain any relevant disclosure document prepared in respect of that product and consider that document before making any decision about whether to acquire the product. This research report is not for retail investors as defined in section 761G of the Corporations Act.

To Hong Kong Residents:

This publication is distributed in Hong Kong by Royal Bank of Canada, Hong Kong Branch, which is regulated by the Hong Kong Monetary Authority and the Securities and Futures Commission (SFC) in Hong Kong, RBC Investment Services (Asia) Limited and RBC Global Asset Management (Asia) Limited, both entities are regulated by the SFC. This material is not for general distribution in Hong Kong to persons who are not professional investors (as defined in the Securities and Futures Ordinance of Hong Kong (Cap. 571) and any rules made thereunder.

To Singapore Residents:

This publication is distributed in Singapore by the Royal Bank of Canada, Singapore Branch, a registered entity licensed by the Monetary Authority of Singapore. This material has been prepared for general circulation and does not take into account the objectives, financial situation, or needs of any recipient. You are advised to seek independent advice from a financial adviser before purchasing any product. If you do not obtain independent advice, you should consider whether the product is suitable for you. Past performance is not indicative of future performance. If you have any questions related to this publication, please contact the Royal Bank of Canada, Singapore Branch. Royal Bank of Canada, Singapore Branch accepts responsibility for this report and its dissemination in Singapore.

To Japanese Residents:

Unless otherwise exempted by Japanese law, this publication is distributed in Japan by or through RBC Capital Markets (Japan) Ltd. which is a Financial Instruments Firm registered with the Kanto Local Financial Bureau (Registered number 203) and a member of the Japan Securities Dealers Association (JSDA) and the Financial Futures Association of Japan (FFAJ).

® Registered trademark of Royal Bank of Canada. RBC Capital Markets is a trademark of Royal Bank of Canada. Used under license.

Copyright © RBC Capital Markets, LLC 2020 - Member SIPC

Copyright © RBC Dominion Securities Inc. 2020 - Member Canadian Investor Protection Fund

Copyright © RBC Europe Limited 2020

Copyright © Royal Bank of Canada 2020

All rights reserved